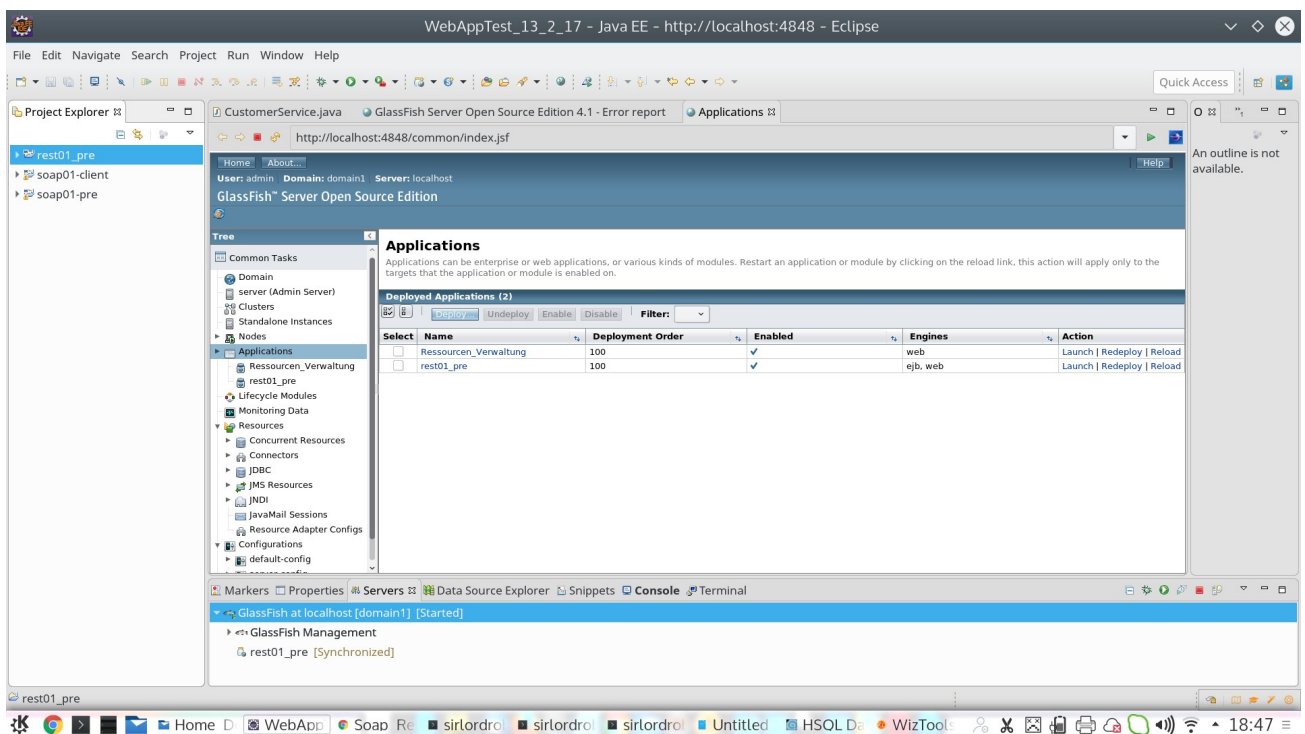
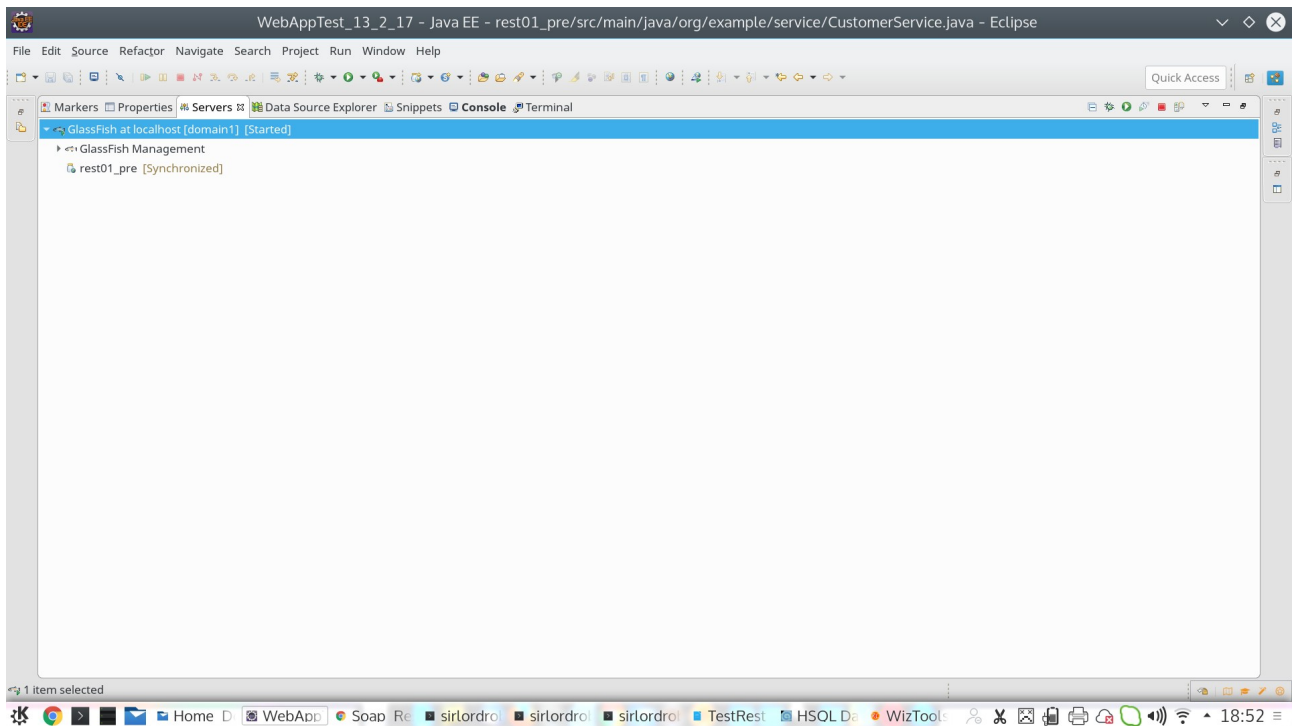


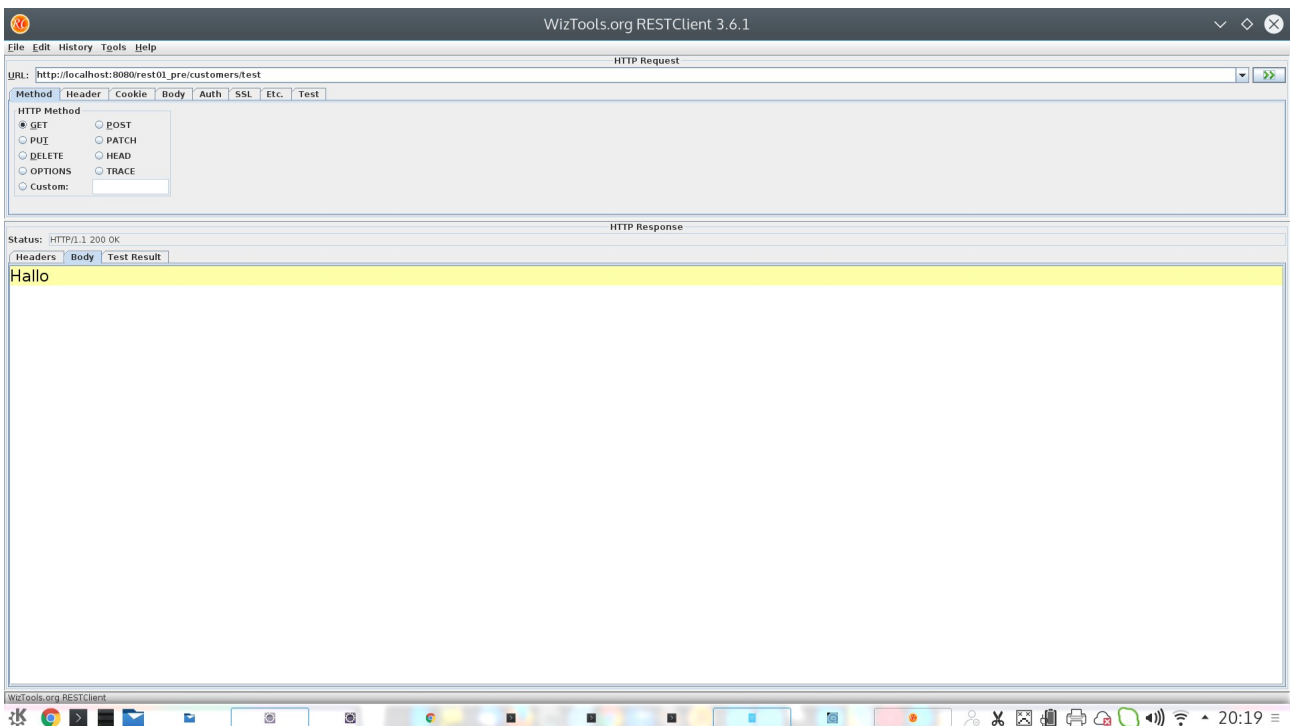
How to test Rest method in WizTools.

1. Deploy the project on server by Right clicking on project, Run As, Run on server .

2.Right click on glassfish, Glassfish, ViewAdmin Console



4. Copy the generated link here is http://localhost:8080/rest01_pre/ past it to wiztools.
After the / , write the **class path** name here is called (customers), then the **method path** name here is called (test).



6.

SOAP Testing.

Step 1
Deploy on glassfish server

Step 2
Copy link and paste into browser.

Step 3
Web Services

Endpoint	Information
Service Name: {http://service.example.org/}CustomerSoapService	Address: http://sirlordrobinson-lenovo-yoga-2-pro:8080/soap01/soap/customer
Port Name: {http://service.example.org/}CustomerPort	WSDL: http://sirlordrobinson-lenovo-yoga-2-pro:8080/soap01/soap/customer?wsdl
	Implementation class: org.example.service.CustomerSoap

Step 4
Copy the WSDL address and paste into SOAPUI url.

Step 2
Copy link and paste into browser.

Markers Properties Servers Data Source Explorer Snippets Problems Console Progress Search JUnit Terminal

```
GlassFish 4 at localhost [domain1]
2017-02-10T20:34:53.418+0100|Info: visiting unvisited references
2017-02-10T20:34:53.605+0100|Info: Webservice Endpoint deployed Customer
listening at address at http://sirlordrobinson-Lenovo-Yoga-2-Pro:8080/soap01/soap/customer.
2017-02-10T20:34:53.663+0100|Info: visiting unvisited references
2017-02-10T20:34:54.013+0100|Info: Webservice Endpoint deployed CoordinatorPortTypeImpl
listening at address at http://sirlordrobinson-Lenovo-Yoga-2-Pro:8080/_wstx-services/CoordinatorPortType.
2017-02-10T20:34:54.034+0100|Info: Webservice Endpoint deployed RegistrationRequesterPortTypeImpl
listening at address at http://sirlordrobinson-Lenovo-Yoga-2-Pro:8080/_wstx-services/RegistrationRequesterPortTypeImpl.
2017-02-10T20:34:54.035+0100|Info: Webservice Endpoint deployed RegistrationPortTypeImpl
listening at address at http://sirlordrobinson-Lenovo-Yoga-2-Pro:8080/_wstx-services/
```

